

Quality Water — Quality Life

Yes! I want to help support conservation in the Roaring Creek Valley by becoming a member of the ROARING CREEK VALLEY CONSERVATION ASSOCIATION!

- ☐ Individual (18 yrs. +) \$20
- ☐ Family \$30
- ☐ Youth (under 18 yrs.) FREE
- ☐ Lifetime \$150
- ☐ Business/Corporate \$250

I am also interested in being part of the following committee(s):

- ☐ Administration/business
- ☐ Education
- ☐ Monitoring

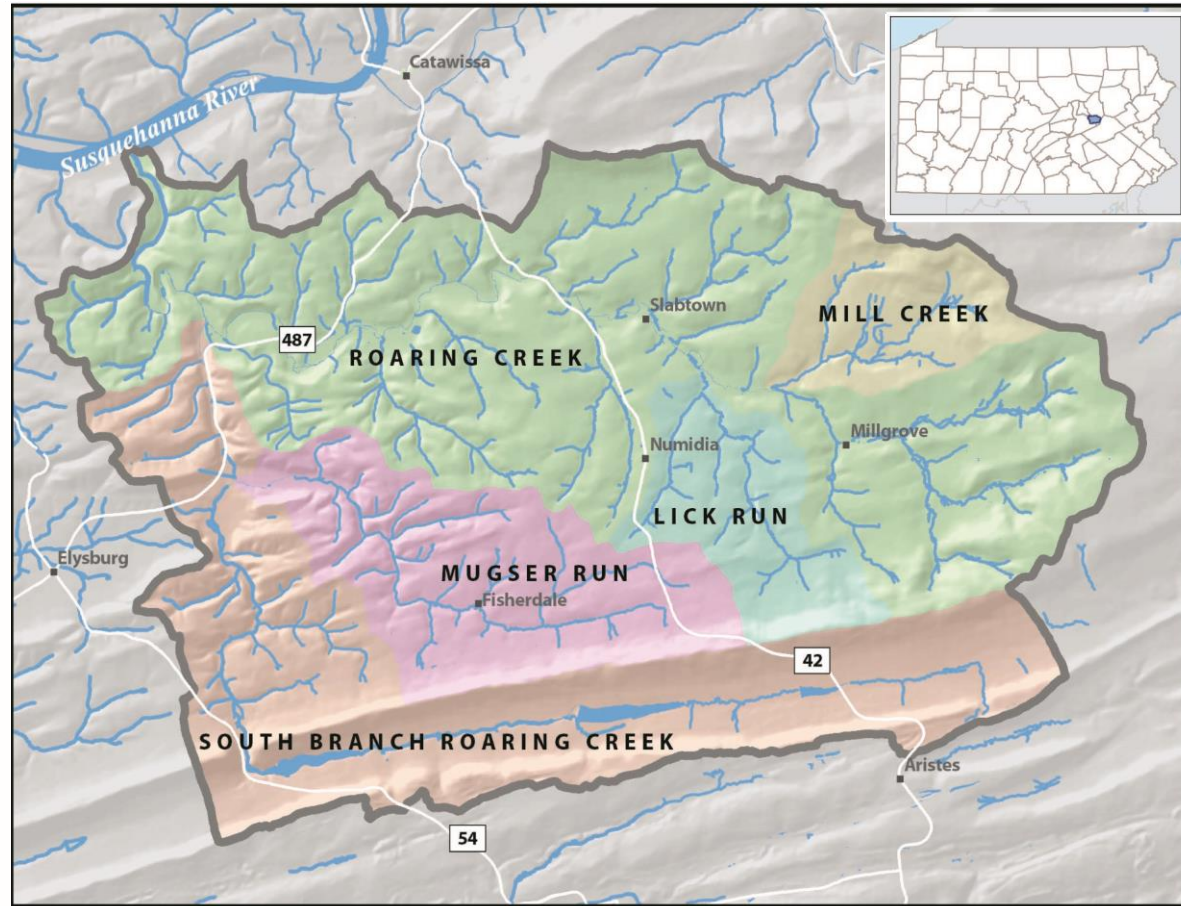
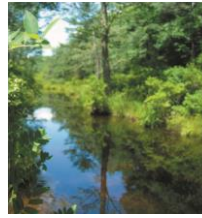
NAME: _____

ADDRESS: _____

PHONE: _____

EMAIL: _____

Make checks payable to:
RCVCA
PO Box 201
Numidia, PA 17858



Promote best management and conservation practices for multiple land use activities throughout the watershed.

Actively support land-use plans, initiatives and programs that address stormwater issues and flooding.

Promote and conserve native plants, animals and aquatic life within the watershed.

Monitor streams and groundwater and support activities for the remediation of polluted waterways and wells.

Become familiar with environmental rules and regulations.

Apply for state, federal and other grants/funds to study, improve or remediate problems within the watershed.

Develop and assist in programs that are aimed at the maintenance and improvement of the natural and cultural resources of the watershed.

Take Action!

Contact us! info@rcvca.org

The Roaring Creek Valley Conservation Association seeks to conserve the natural resources of the basin and its rich culture through watershed stewardship, education, and monitoring.



A watershed is an area of land that drains into a body of water. Wherever you are, you are in a watershed!



Size 80 square miles



Counties Columbia, Montour, Northumberland



Townships Cleveland, Conyngham, Franklin, Locust, Mayberry, Mount Carmel, Ralpho, Roaring Creek

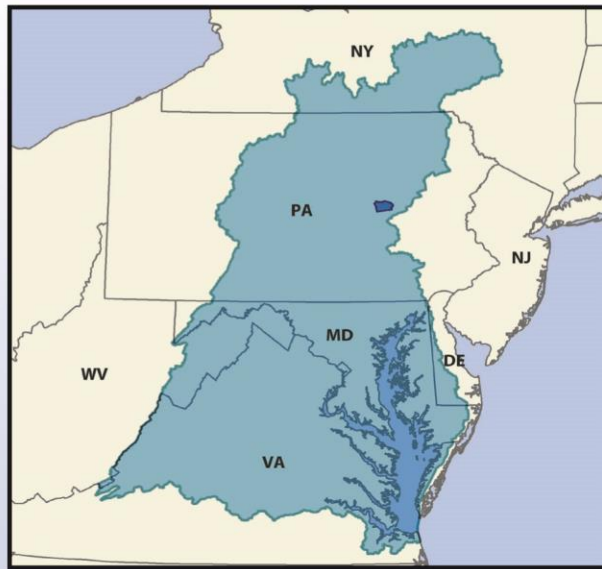


Main creeks Lick Run, Mill Creek, Mugser Run, North Branch Roaring Creek, South Branch Roaring Creek



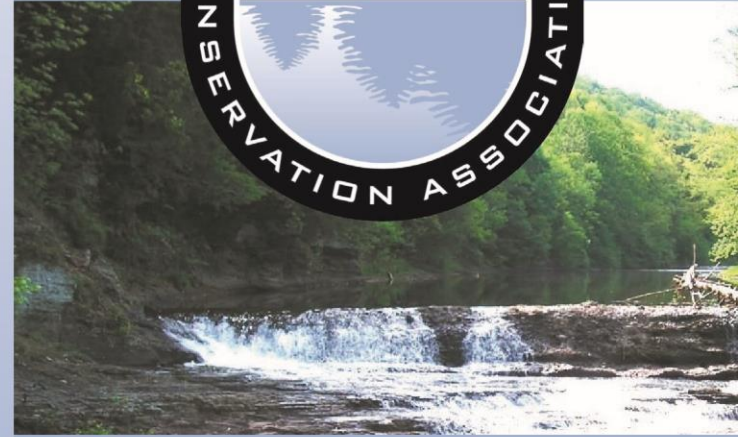
Natural features Dry Oak and Hemlock Forest, Pinnacle, Ridge and Valley Topography, Waterfalls, Weiser State Forest

Historic features Covered Bridges, Hooded Graves, Millgrove Mill, Roaring Creek Quaker Meeting House



The 80 square mile Roaring Creek watershed is part of a larger, 64,000 square mile drainage system - the Chesapeake Bay

watershed. A raindrop landing in the Roaring Creek watershed will travel downstream to the Susquehanna River, flow into the Chesapeake Bay, and end up in the Atlantic Ocean. Pollutants from the land are carried downstream, degrading our local water quality and that of the Chesapeake Bay. We can make a difference by caring for our streams in the Roaring Creek Valley.



www.rcvca.org

